

MEDICAL OBSTETRICS AT HOME SERVICE: REDUCING READMISSIONS BY PROVIDING CARE AT HOME



Vinita Rane
Seda Kiroglu
Siaw Wong



THE IDEA...

Pregnancy is not an illness

Supporting women to remain
at home- even when
complications arise

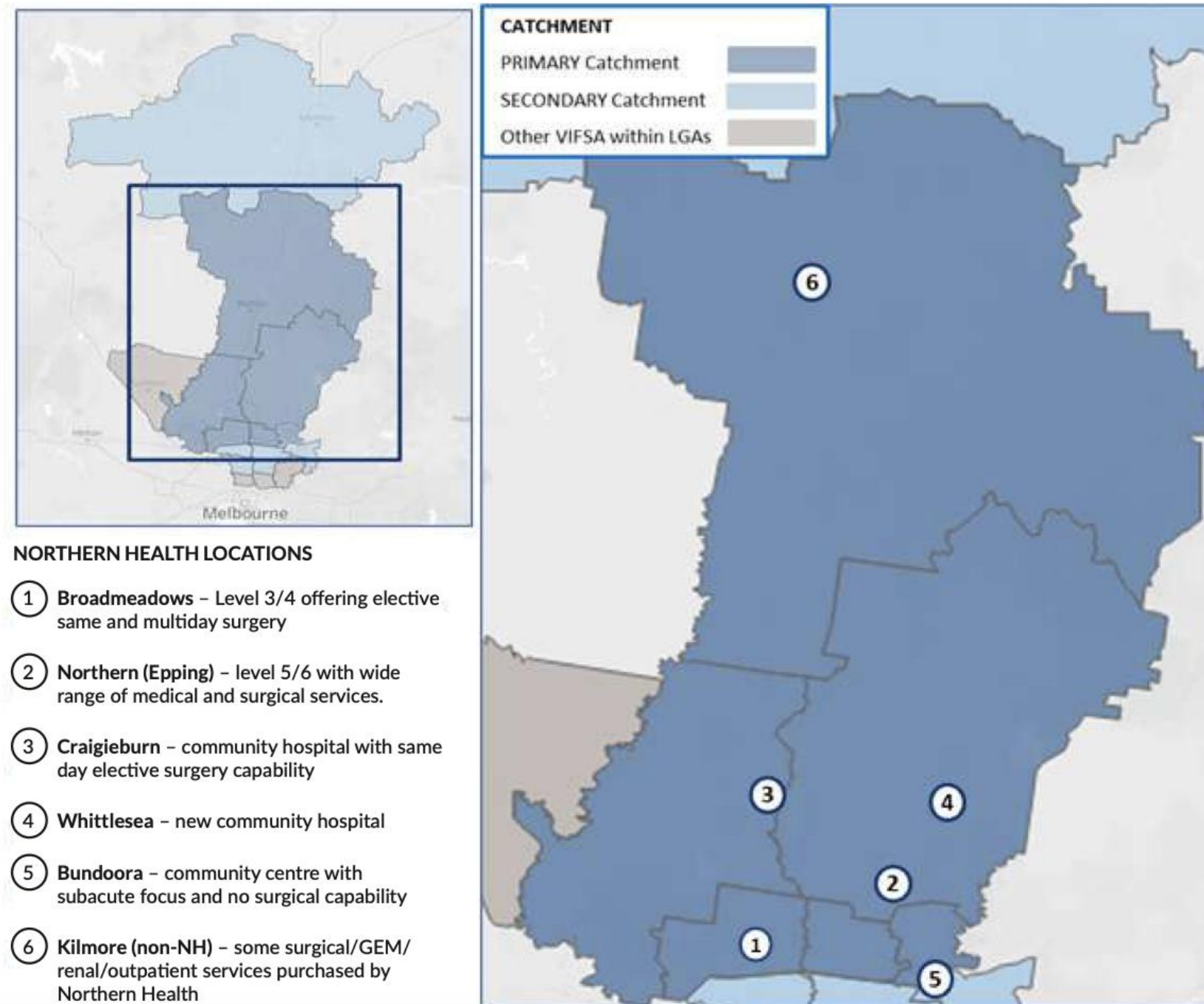


Collaboration between
midwives and medical staff

Preventing inpatient
admissions and provide better
continuity of care

THE COMMUNITY...

The Northern Health catchment includes three of the state's six fastest growing areas: Hume, Whittlesea and Mitchell. Due to the rapid development of new suburbs in the north, our population is projected to grow with an annual growth rate of 2.7% over the next decade, reaching an estimated 740,000 by 2036.



METHODS

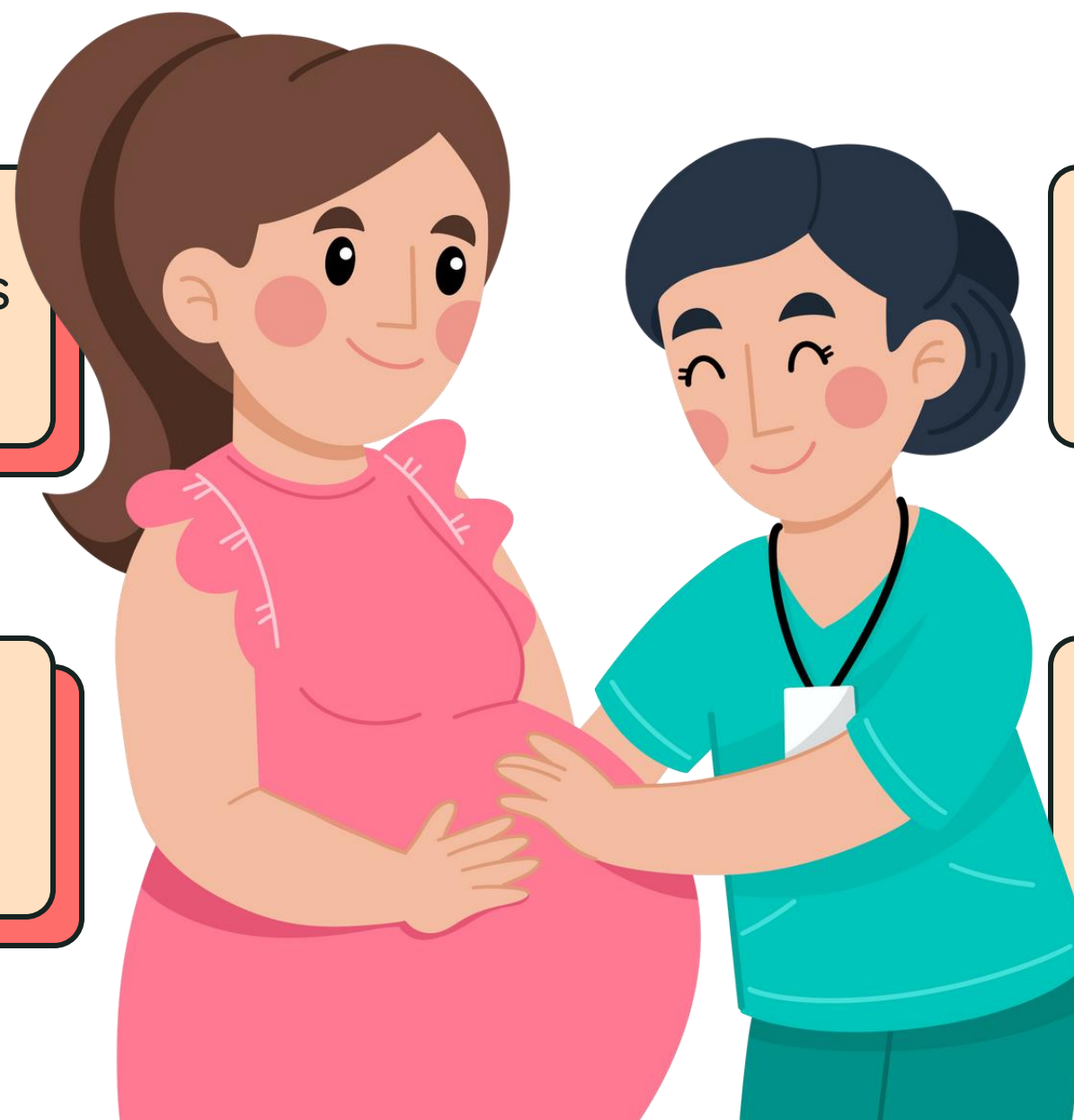
THE TEAM

Medical Obstetrics Physicians

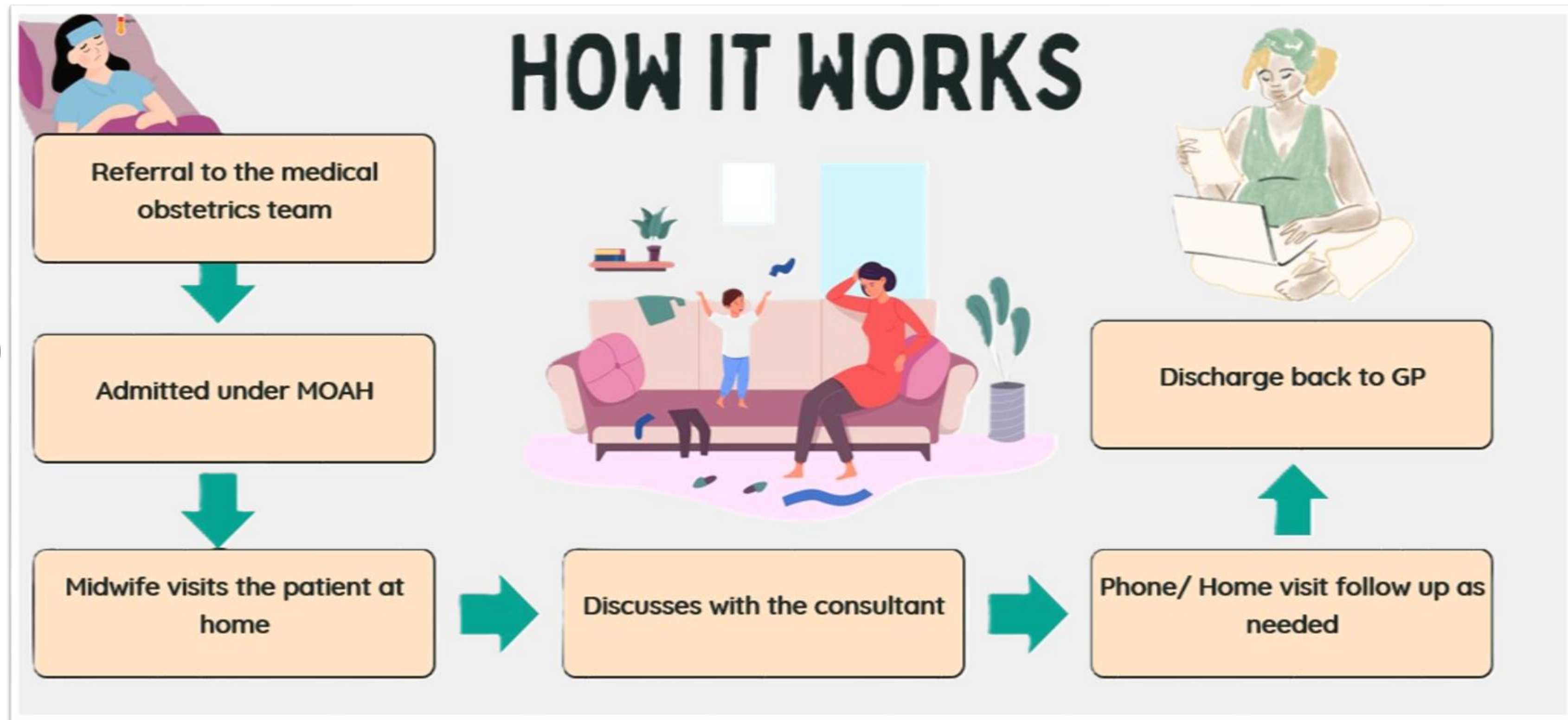
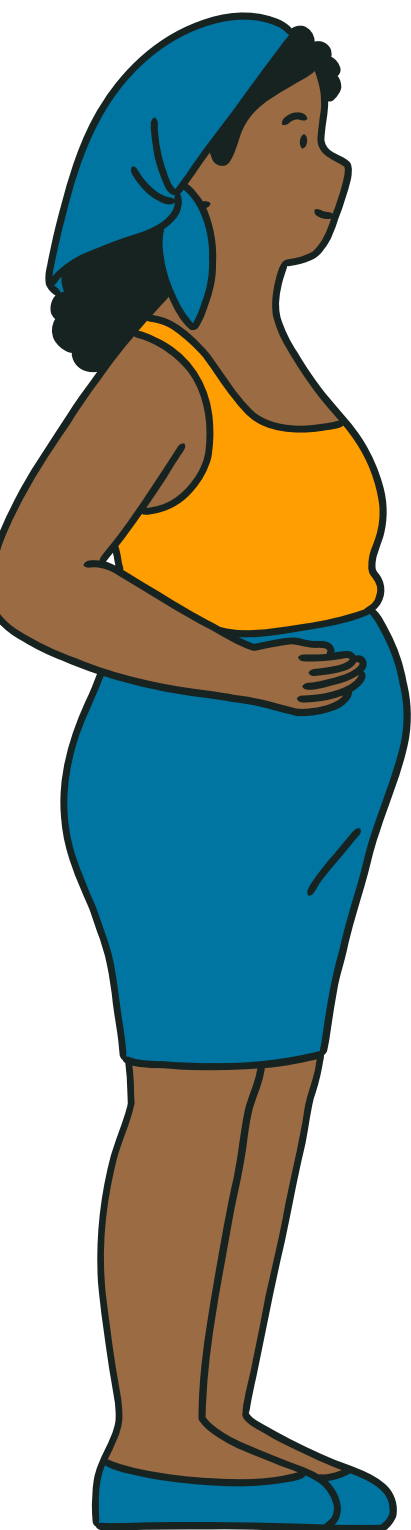
Midwives

Administrative Support

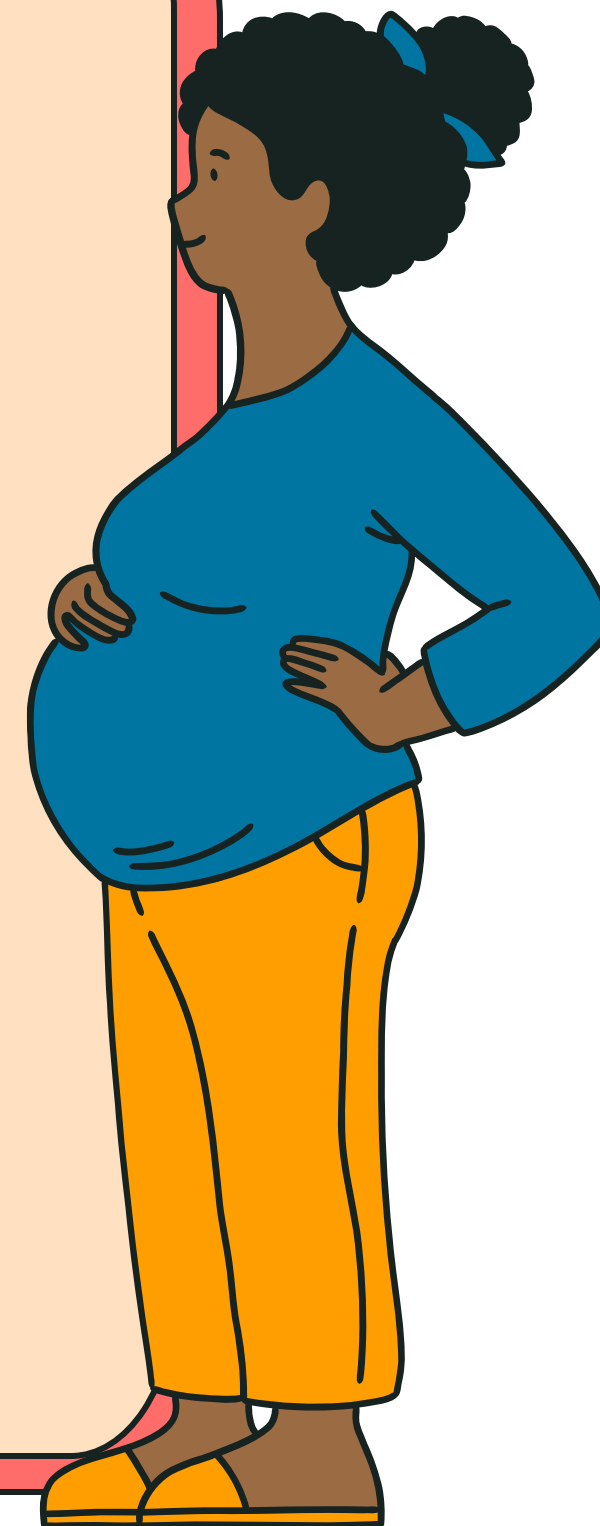
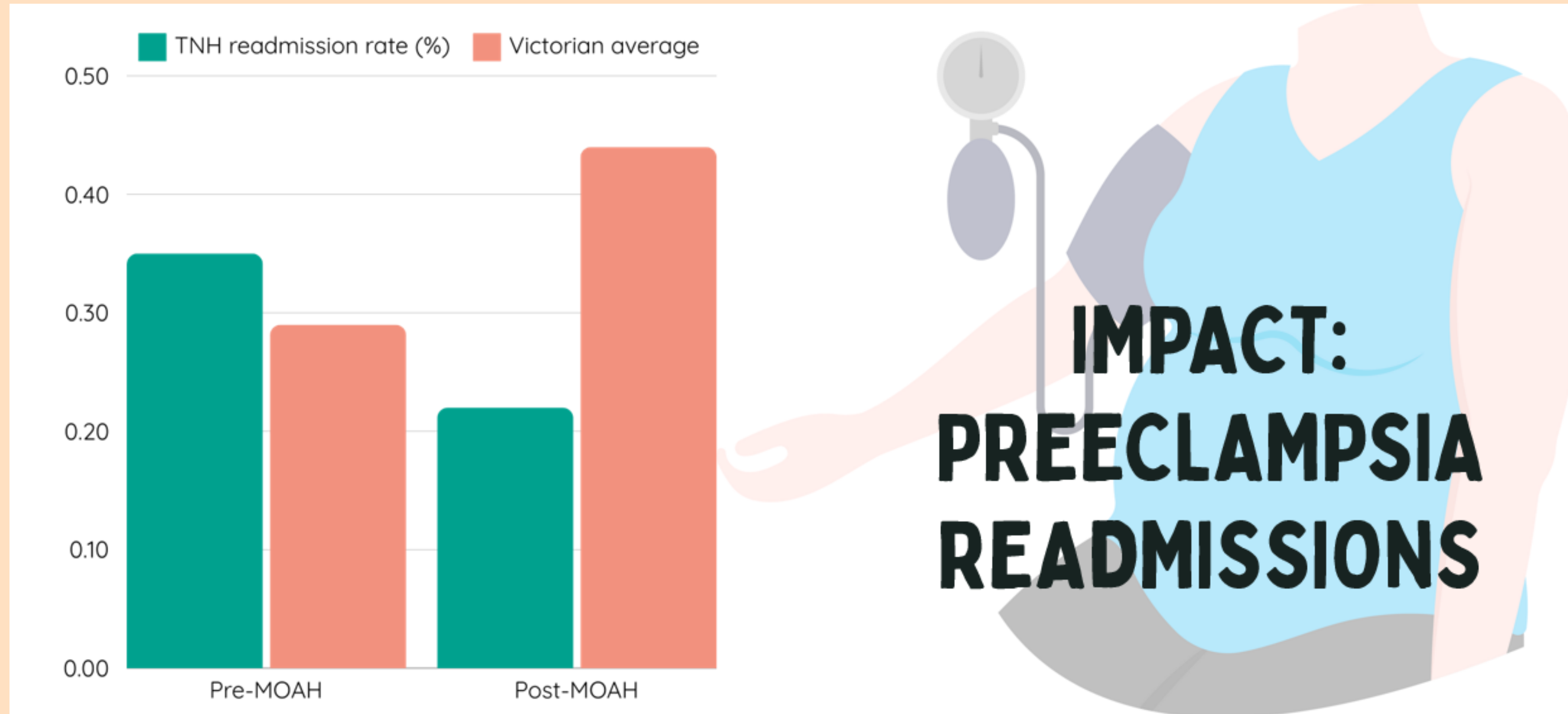
The women



METHODS



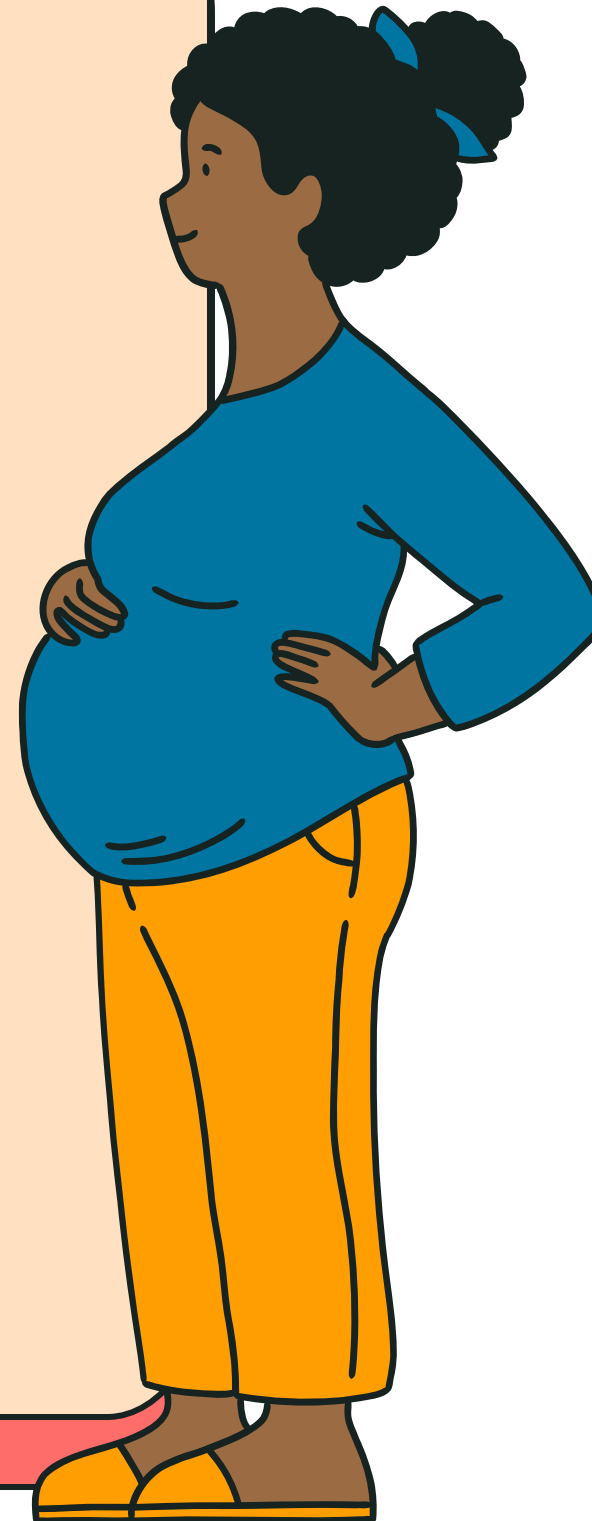
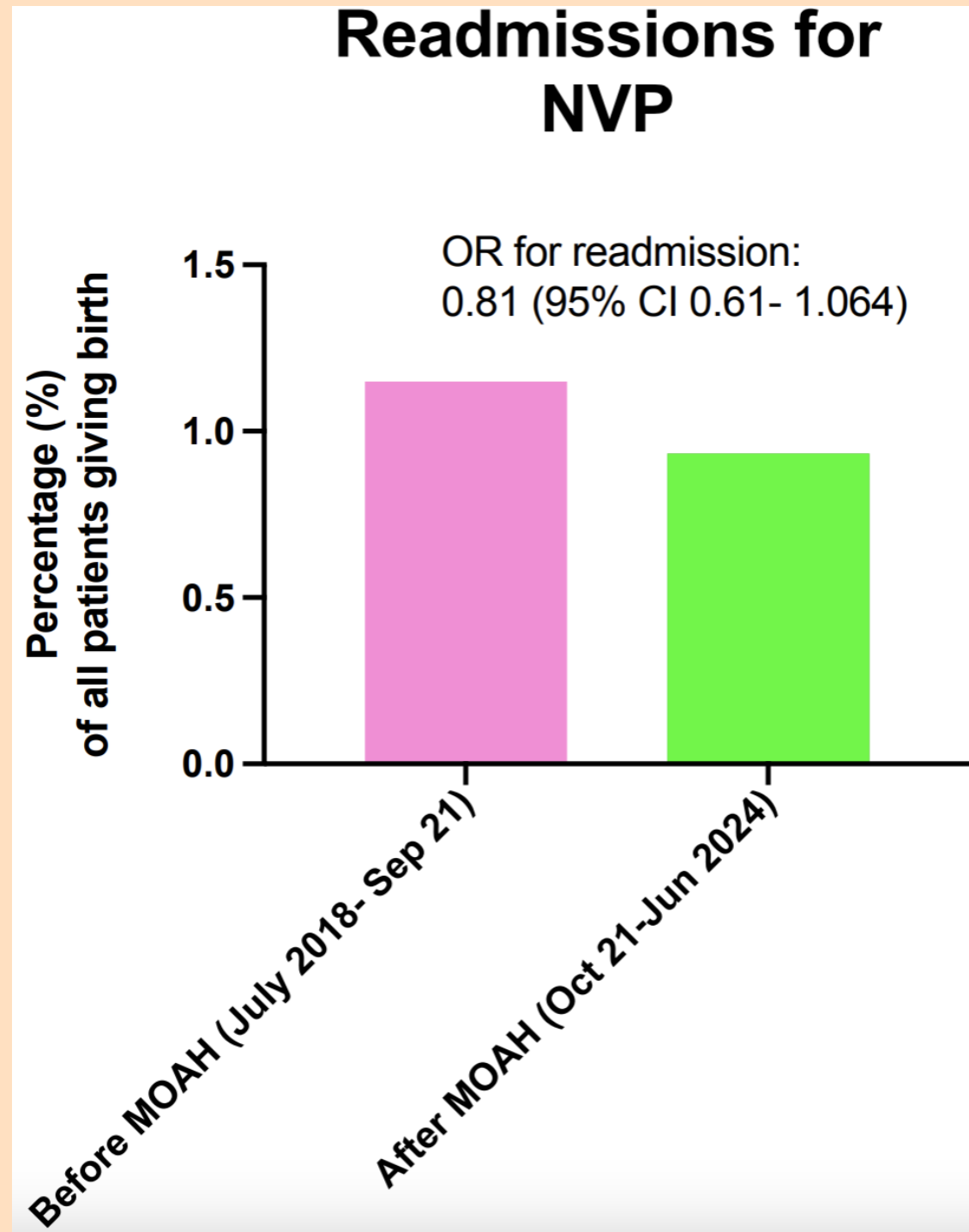
RESULTS



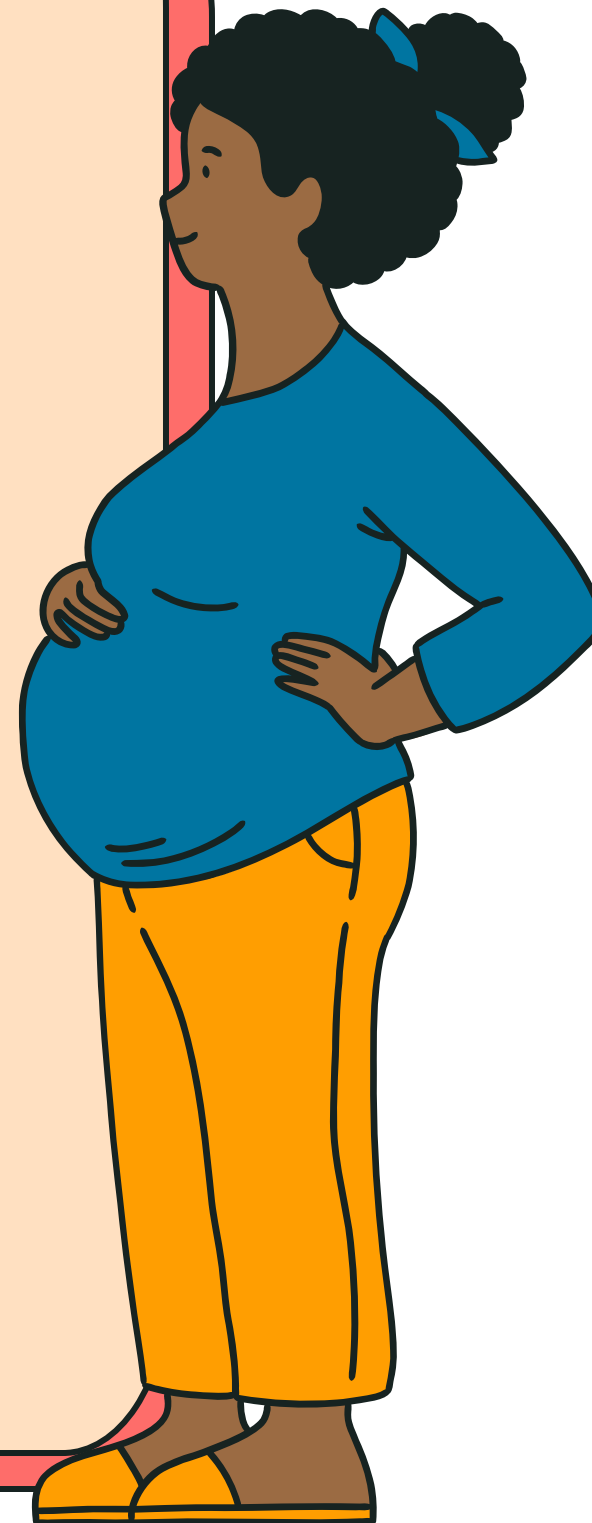
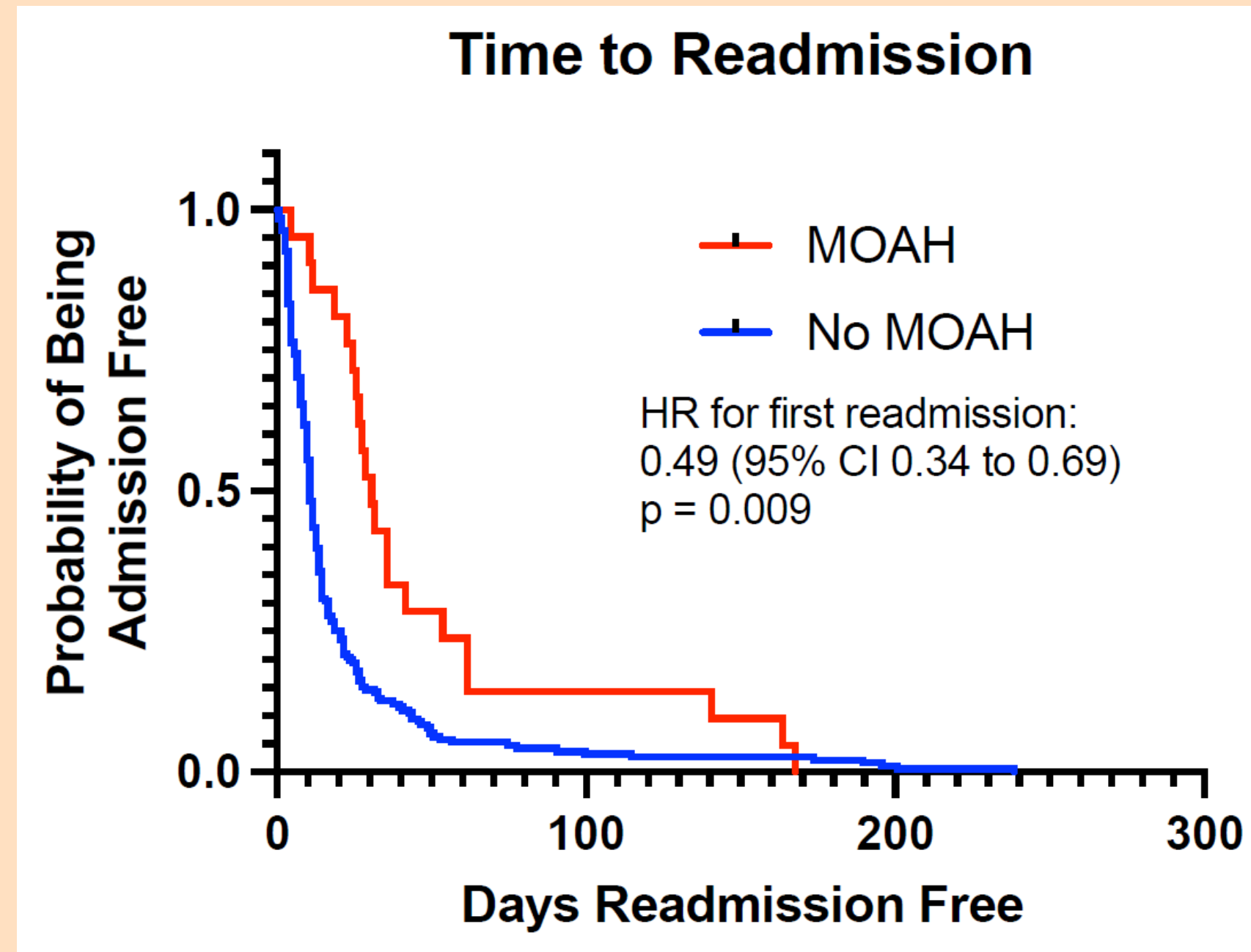
RESULTS



**IMPACT:
HYPEREMESIS
READMISSIONS**



RESULTS



DISCUSSION- KEY BENEFITS

Novel

- Australian first
- Unique combination of home visits and telehealth consults

Collaborative

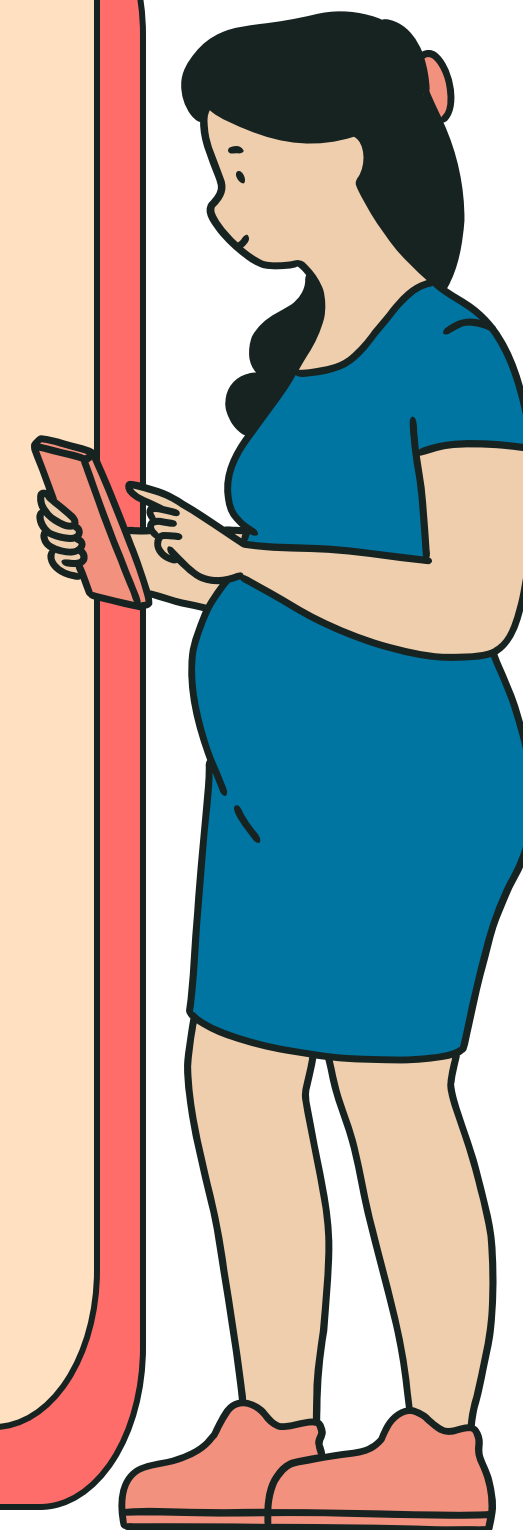
- Multidisciplinary- midwifery, medical obstetrics & allied health
- Working with women & their families

Continuity

- Closing the gap between inpatient & outpatient care
- Extending inpatient care beyond the hospital walls

Women-centred

- Keeping women with their families



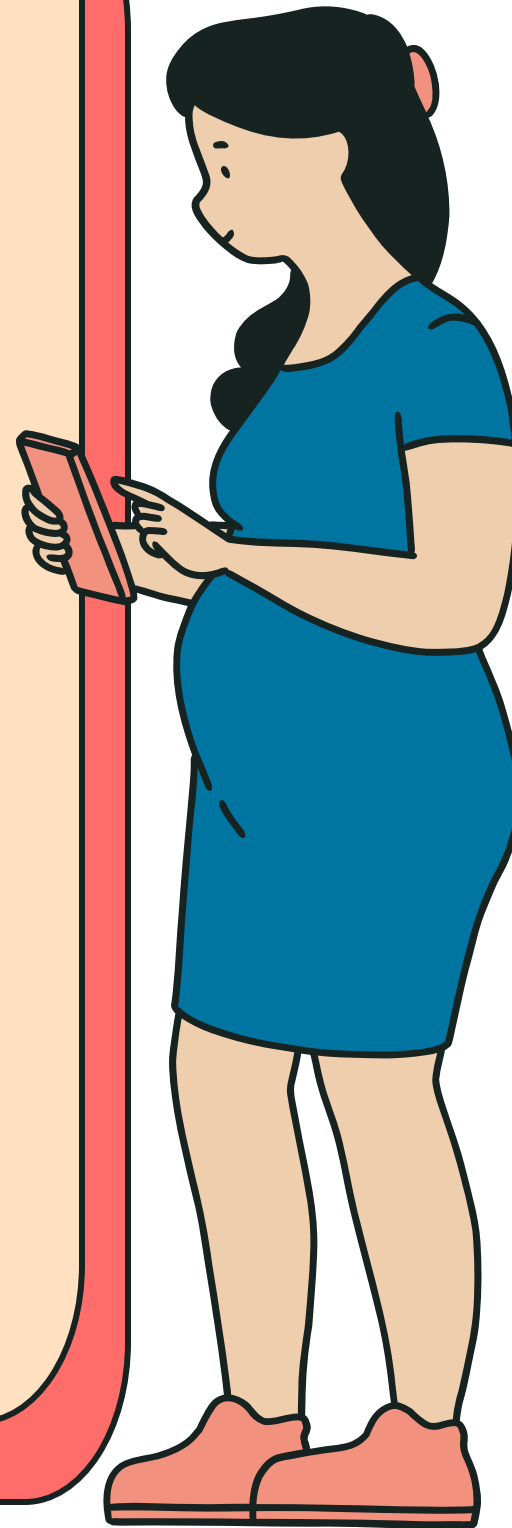
DISCUSSION- ECONOMIC IMPACT

Benefits to hospital

- Reduction in planned and unplanned re-admissions
- Increased access and capacity
- Reduced demand on ED

Potential improvement in social costs

- Increased ability to stay at work
- Reduced petrol costs, needing to arrange childcare etc



DISCUSSION- STUDY LIMITATIONS

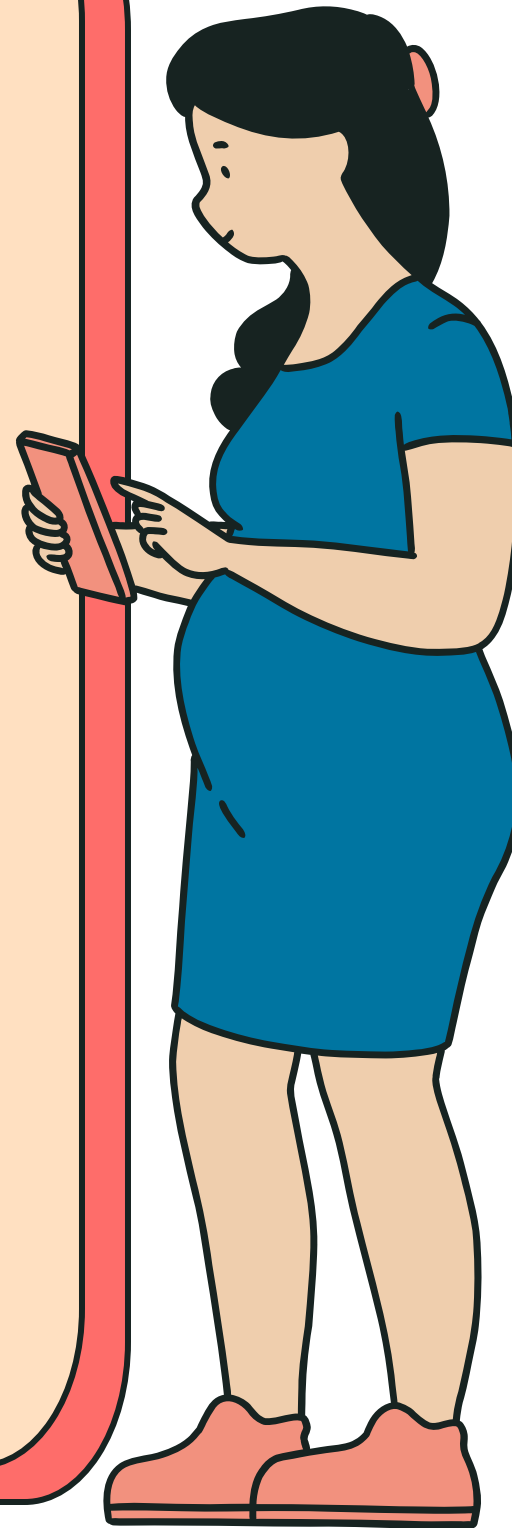
Retrospective, single-centre audit

Local community

- Large Medicare-ineligible population
- Lowest per-capita rate of General Practitioners

Victoria

- COVID-19 lockdowns & community restrictions (2020-2021)
 - Impact on HG service in particular
- Reduced midwifery staffing & hospital budget

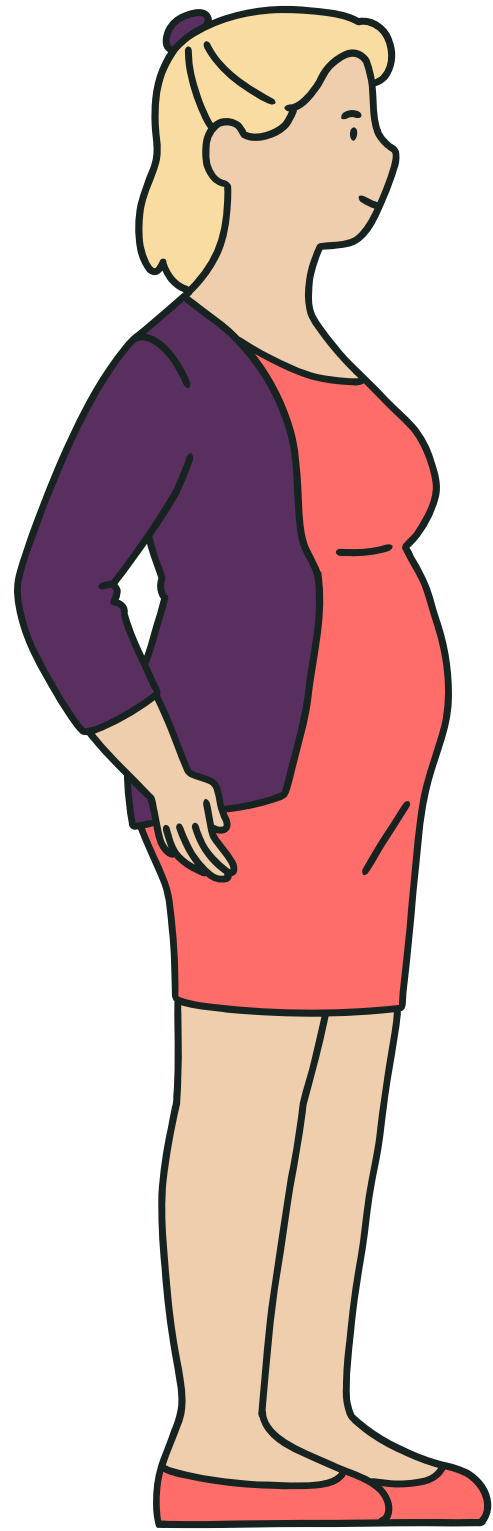


THE FUTURE

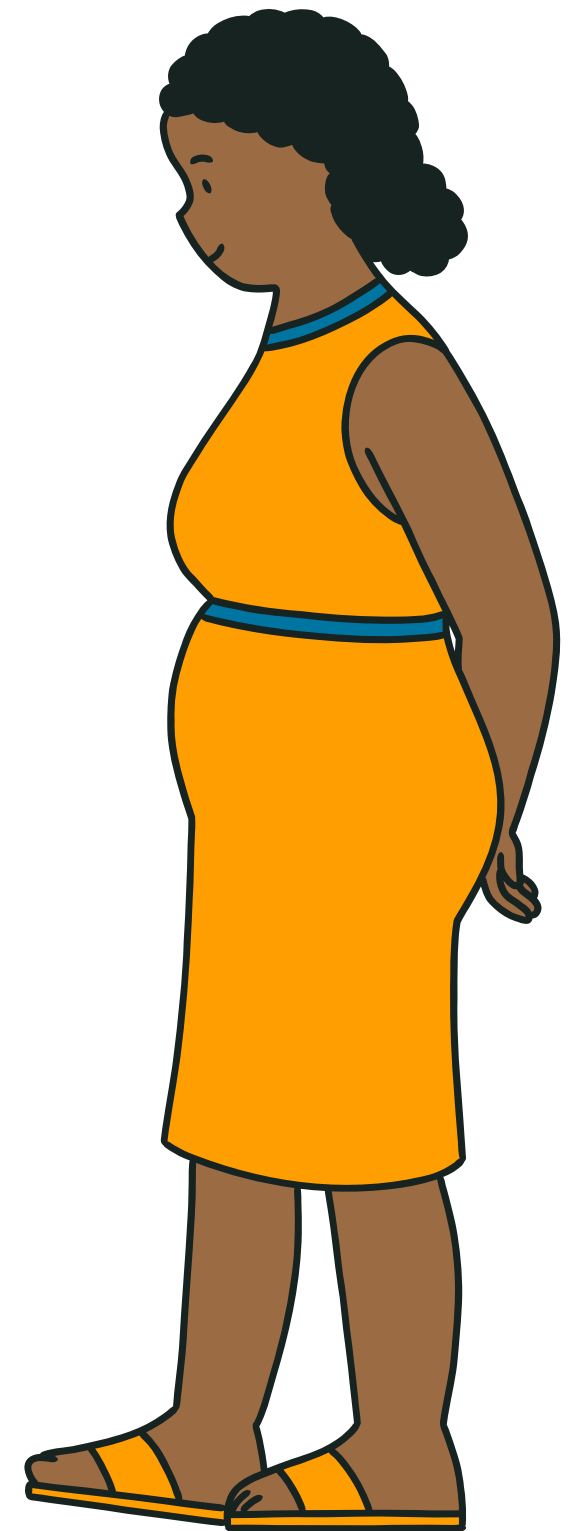
- Qualitative study on patients' experiences
- Expansion of services to 7 days/week
- Addition of dietitian, psychologist & social worker
- Integration with digital care/remote patient monitoring pathways
- Expanding to more complex patients eg; cardiac, endocrine & prevernas



CONCLUSION



**MOAH:
PROVIDING WOMEN
CENTRED CARE AT
HOME**



ACKNOWLEDGEMENTS

MOAH Midwives:

Natasha Hallock
Rachel Kemp
Christine O'Reilly
Heather Burgess



Data extraction and analytical support

Nga Dang
Tim Pianta

MOAH Physicians:

Tim Pianta
Sarah Jones
Michele Bardin
Stephanie Montalto
Reetu Gogna
William Lau

QUESTIONS?

Contact details

Dr Vinita Rane (MOAH Medical Lead) - vinita.rane@nh.org.au

Ms. Seda Kiroglu (MOAH Midwifery Unit Manager) - seda.kiroglu@nh.org.au

Dr Siaw Wong (Head of Medical Obstetrics) - siaw.h.wong@nh.org.au